

# DÔME

PROJECT INTERIORS

# SUMMARY

2.ABOUT US

3.HOW WE WORK

5. VILLA LAKE GENEVA

19. ALBANY PENTHOUSE

27. GENEVA APARTMENT

35. LONDON PENTHOUSE

45. FRENCH RIVIERA FAMILY HOUSE

55. AMELS YACHT INTERIOR REFIT

65. MIAMI PENTHOUSE

81. FRENCH ALPS CHALET

# ABOUT US

Founded in 2005 by Cécile Demole, Dôme Project Interiors is a high-end interior architecture and design studio based in Geneva, Switzerland.

We are specialized in residential interiors and can accommodate any interior design demand, whether it being for private residences, chalets, yachts or business premises, in order to create interiors that mirror your personality.

We work internationally and have developed projects in the United Kingdom, France, Spain, the Bahamas and the United States.

We take care of every step of your project with real attention to detail, from conception to completion.

We are committed to perpetuating excellence thanks to our creative team, made up of interior architects, decorators, upholsterers and quilters.



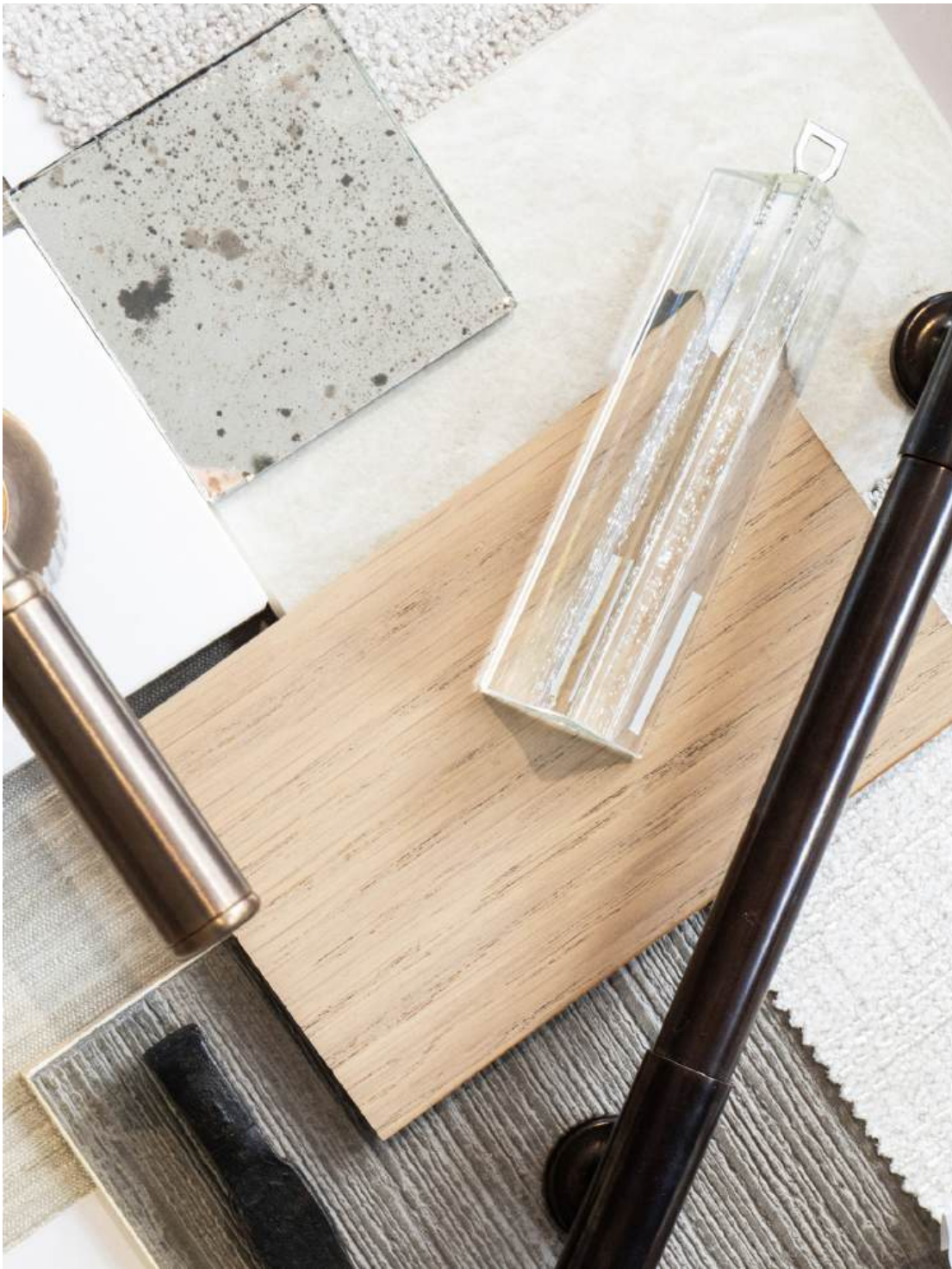


# HOW WE WORK

Every project we develop is unique.  
From conception to completion, we offer a turn-key solution and can adapt to any demands and wishes.

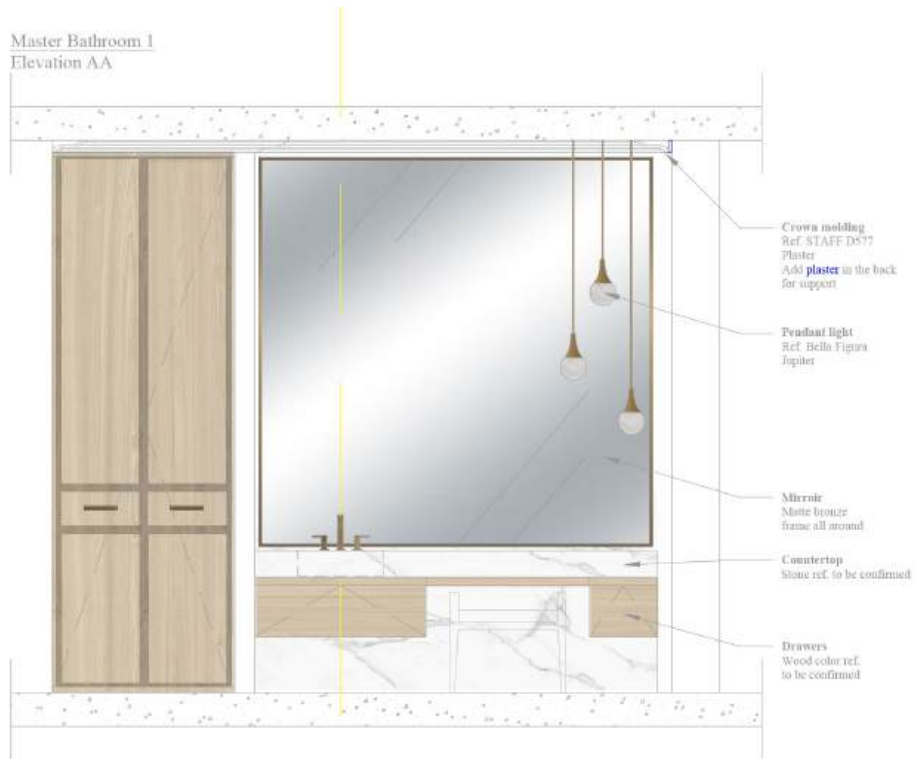
**THE BRIEF:**  
The first step of the development is to understand your wishes. Our design team studies the creative, financial and practical feasibility of the site or concept, and evaluates its potential to obtain the best result.

**DESIGN DEVELOPMENT**  
The second step consists of maximizing the true potential of the project by creating spaces in line with the brief.



**PRESENTATION**  
The third step allows you to visualize in a very realistic way the final result of the project with moodboards, technical drawings or 3D visuals. A selection of materials and furniture are also presented if necessary.

**PROJECT MANAGEMENT**  
We oversee the entire project from concept to installation, participating in regular site meetings to ensure the project is carried out according to our plans and that the project is progressing as planned and within budget.





## VILLA LAKE GENEVA



For this villa located by the lake, near Geneva, we reimagined the layout of the lower ground floor and upper floor.

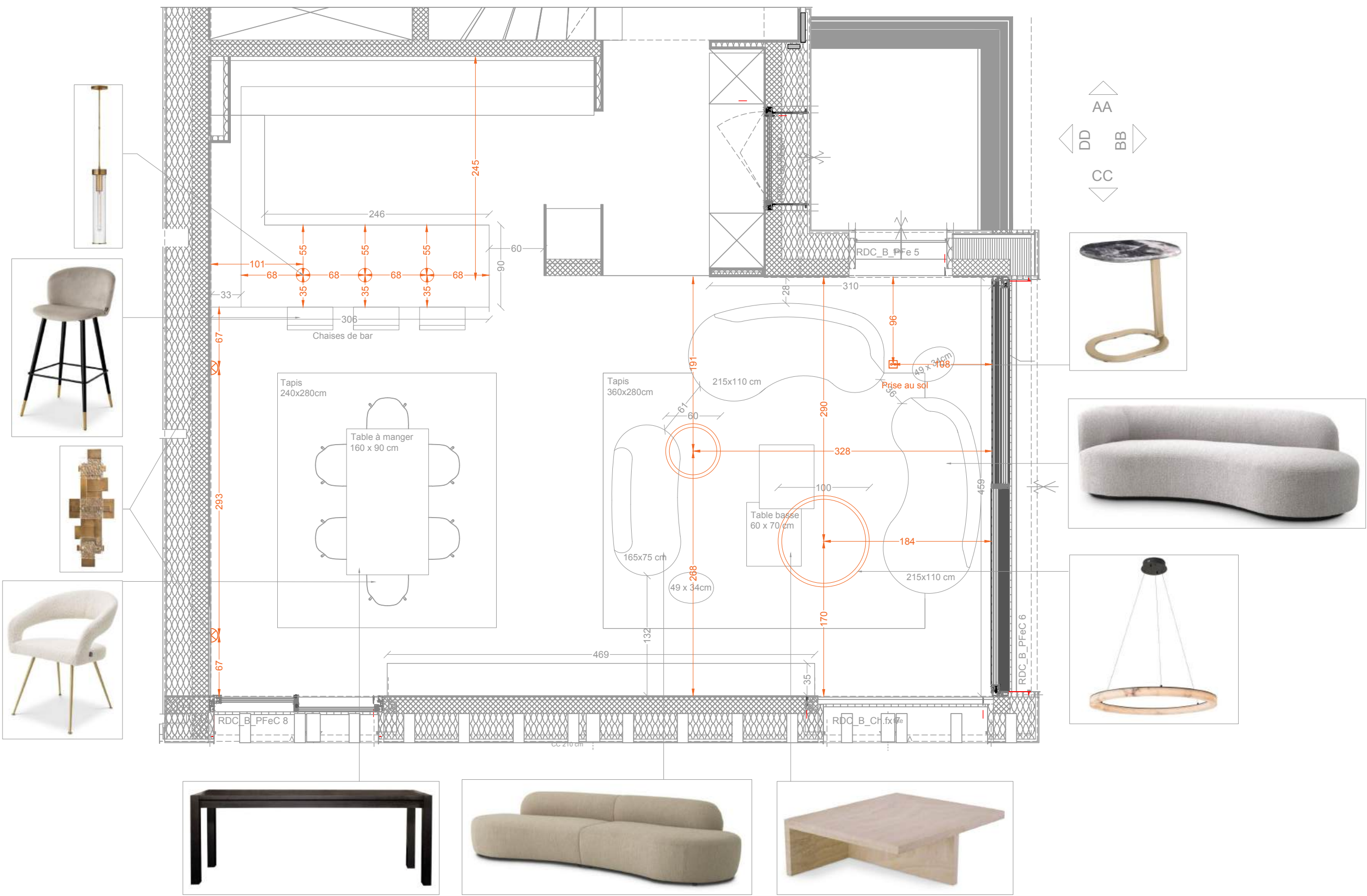
The main challenge of this project was to blend the simplicity of architectural lines with a warm atmosphere.





# VILLA LAKE GENEVA

To achieve this, we focused on using noble materials such as wood, travertine, and brass, which bring soft and comforting tones. These carefully selected finishes give the living room a timeless elegance while creating a welcoming environment.







A key feature of this design is the custom-made bookshelf that we conceived and developed. It incorporates an electric fireplace, creating a harmonious link between the living room and the dining room. This multifunctional piece of furniture adds not only an aesthetic dimension but also plays a functional role by subtly redefining the spaces while maintaining fluid circulation.









## VILLA LAKE GENEVA



Additionally, we introduced sofas with rounded curves, which contrast pleasantly with the straight, clean lines of the surrounding furniture. This play on shapes brings a touch of softness while staying true to the contemporary spirit of the villa.

Sumptuous alabaster pendant lights, delicately suspended, enhance the ceiling height, casting a soft, soothing light that envelops the space in a cozy atmosphere.

Overall, this project is a subtle blend of modernity and conviviality, where every element has been thoughtfully designed to create a living space that is both functional and refined, meeting the expectations of an exceptional place.













## ALBANY PENTHOUSE



For this new-build project for a high-end apartment in the Bahamas, our ambition was to design a space combining sophistication and serenity, featuring light tones and refined materials.

We chose light oak for its warm, soothing properties, bringing a natural, elegant touch to the whole space.





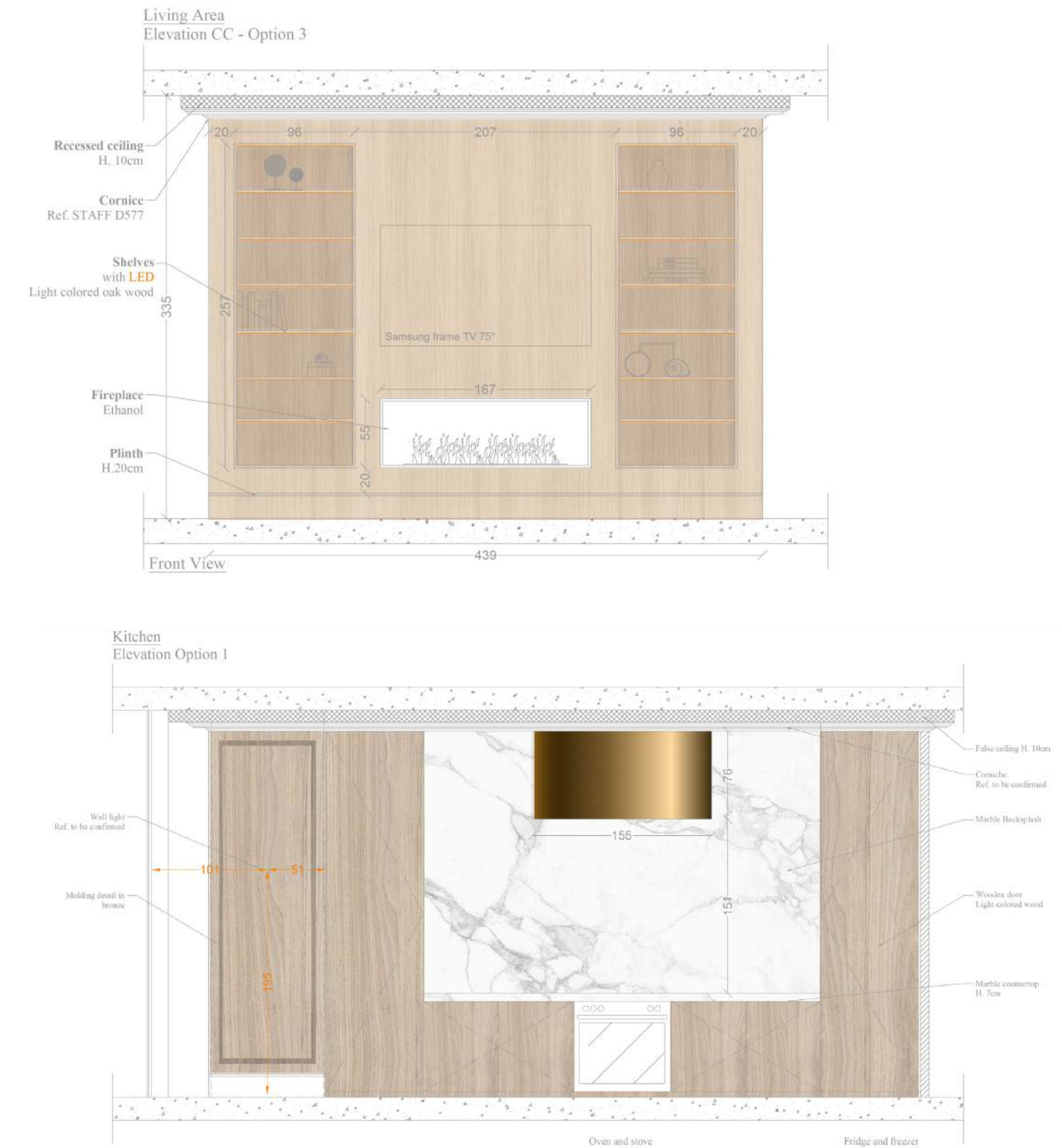


## ALBANY PENTHOUSE

Curved lines, integrated into the furniture and fittings, instill a dimension of softness and fluidity, inviting relaxation and harmony.

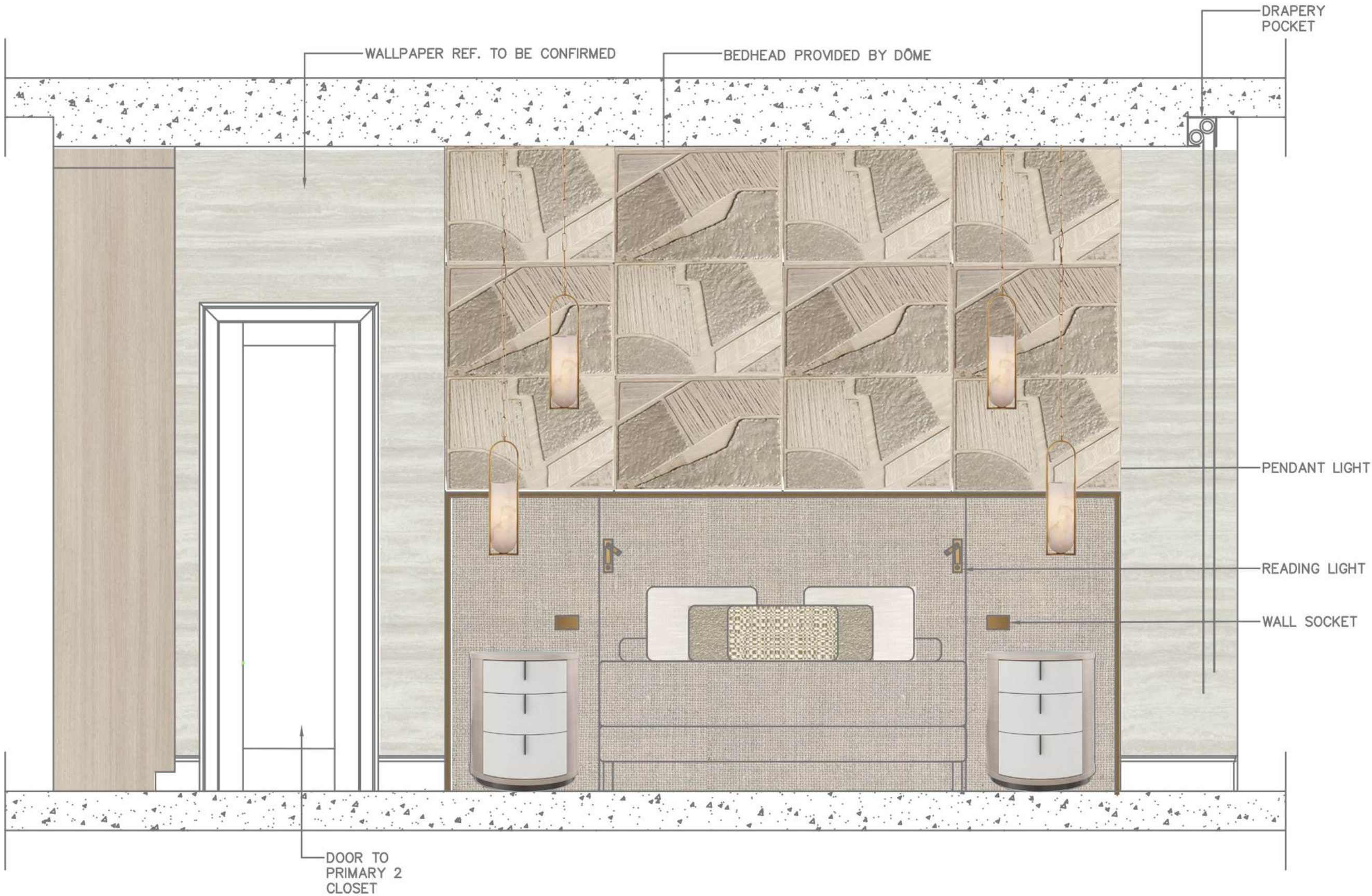
To subliminate this exceptional setting, gold accents have been carefully integrated, creating a subtle contrast with the soft materials and enhancing the luxurious feel of the space.

Travertine, selected for its timeless elegance, adorns the kitchen and bathrooms, reinforcing the visual appeal of the whole and ensuring aesthetic continuity.





ALBANY PENTHOUSE





## ALBANY PENTHOUSE



Delicate glass fixtures create a luminous, airy ambience, diffusing a soft, warm light that accentuates the light tones while highlighting the natural textures of the materials.

This project aims to create a unique environment where every detail is meticulously thought out to offer a refined and soothing living environment, in perfect harmony with the surrounding beauty of the Bahamas.





## GENEVA APARTMENT



For this apartment we are renovating in Geneva, we worked on a full reconfiguration of the space to match the wishes of the client. With a focus on a contemporary atmosphere and noble materials, this apartment has an Italian design essence with linear structures, an emphasis on wooden carpentry, and a palette of neutral tones.









GENEVA APARTMENT

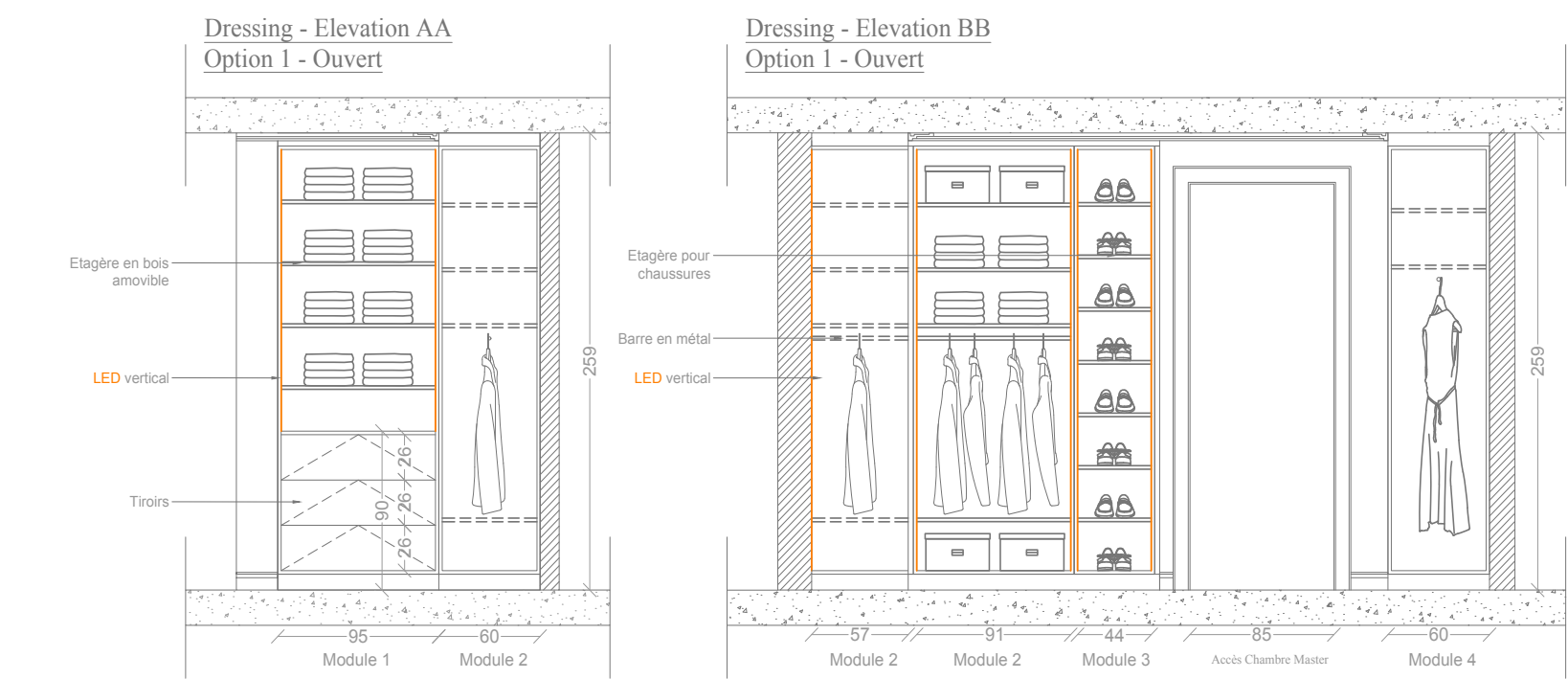




# GENEVA APARTMENT

With the objective of creating a timeless design and a practical layout of the apartment, we created a dressing room connected to the master bedroom and expanded its connecting adjoining bathroom.

For the 2nd bedroom we added a connecting bathroom to create an en suite. Additionally, we conceived a customized office space with bespoke carpentry and reconstructed the entire kitchen.





## LONDON PENTHOUSE



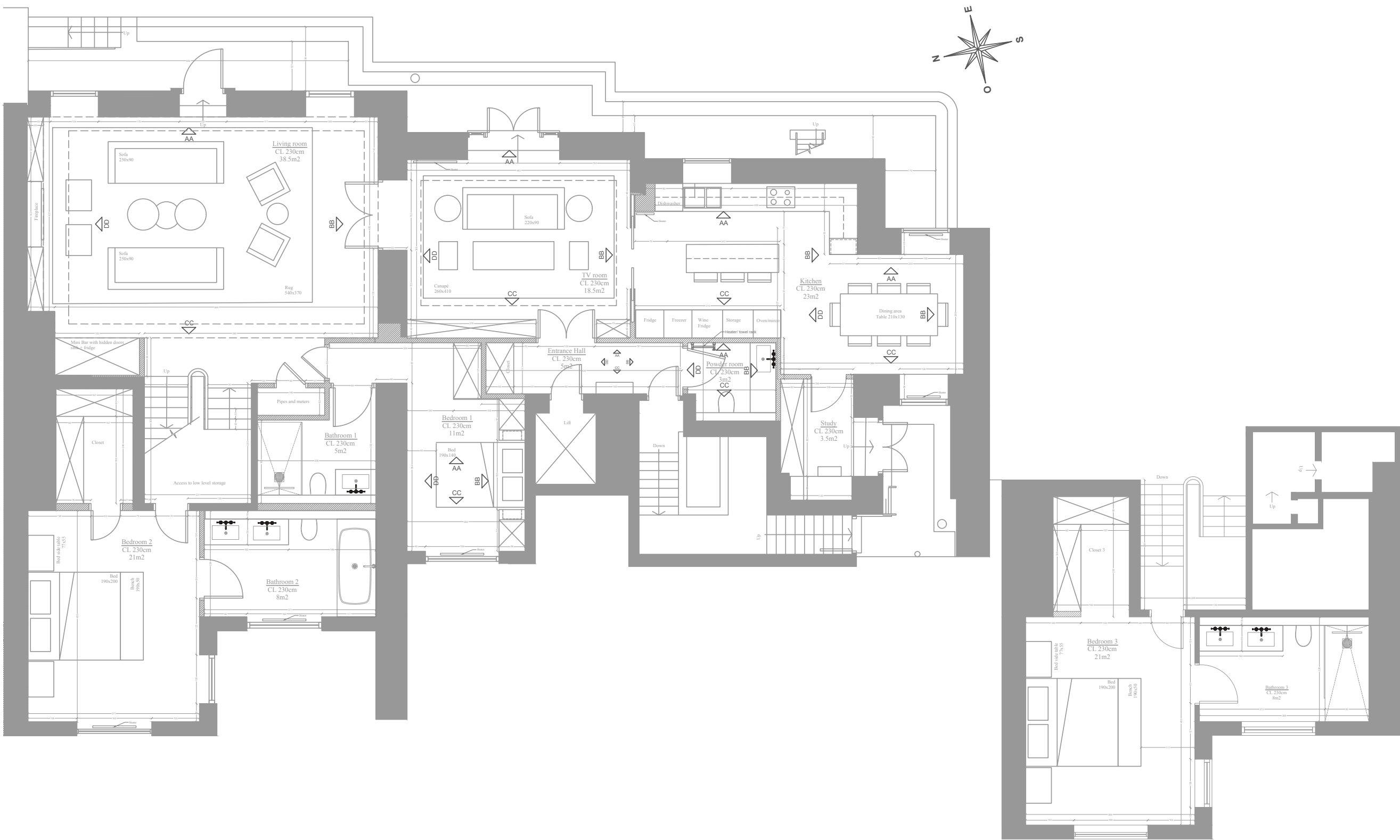
For our London-based project in the heart of Belgravia, we're transforming a penthouse into a sophisticated blend of classical elegance and contemporary design.

The goal is to marry modern, organic furniture traditional with traditional architectural elements with modern, organic furniture shapes to create a timeless yet forward-looking space.





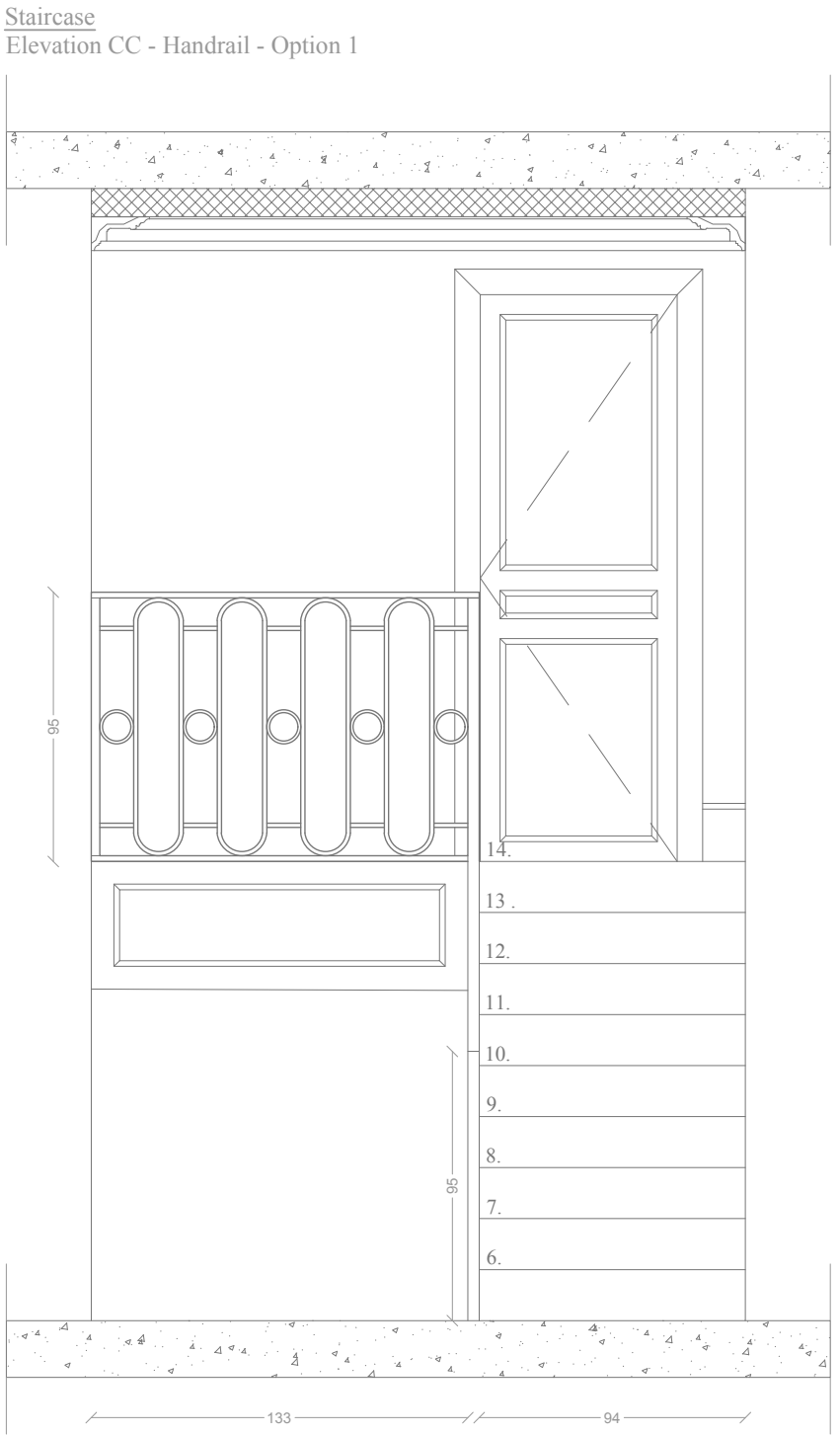
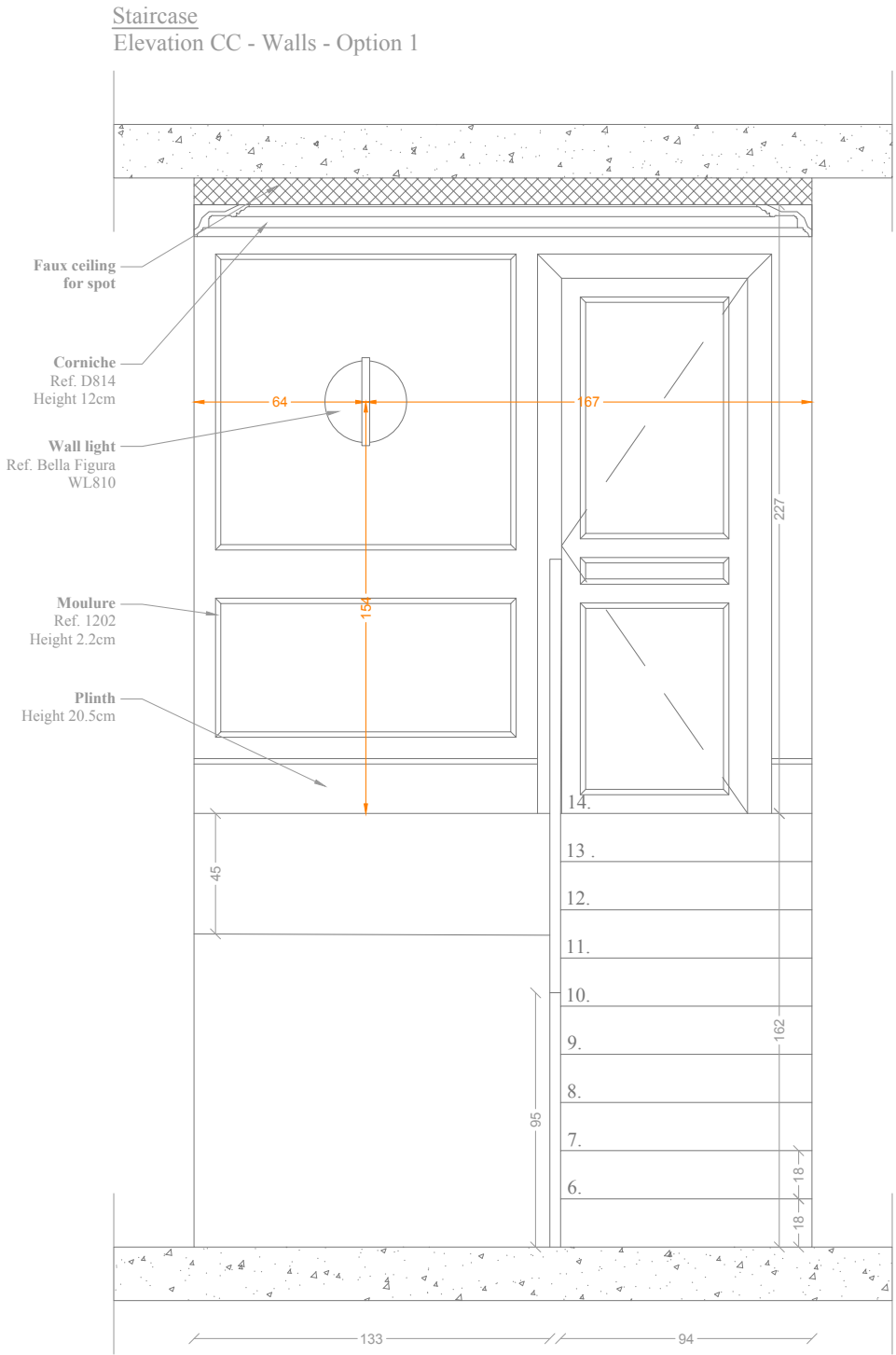
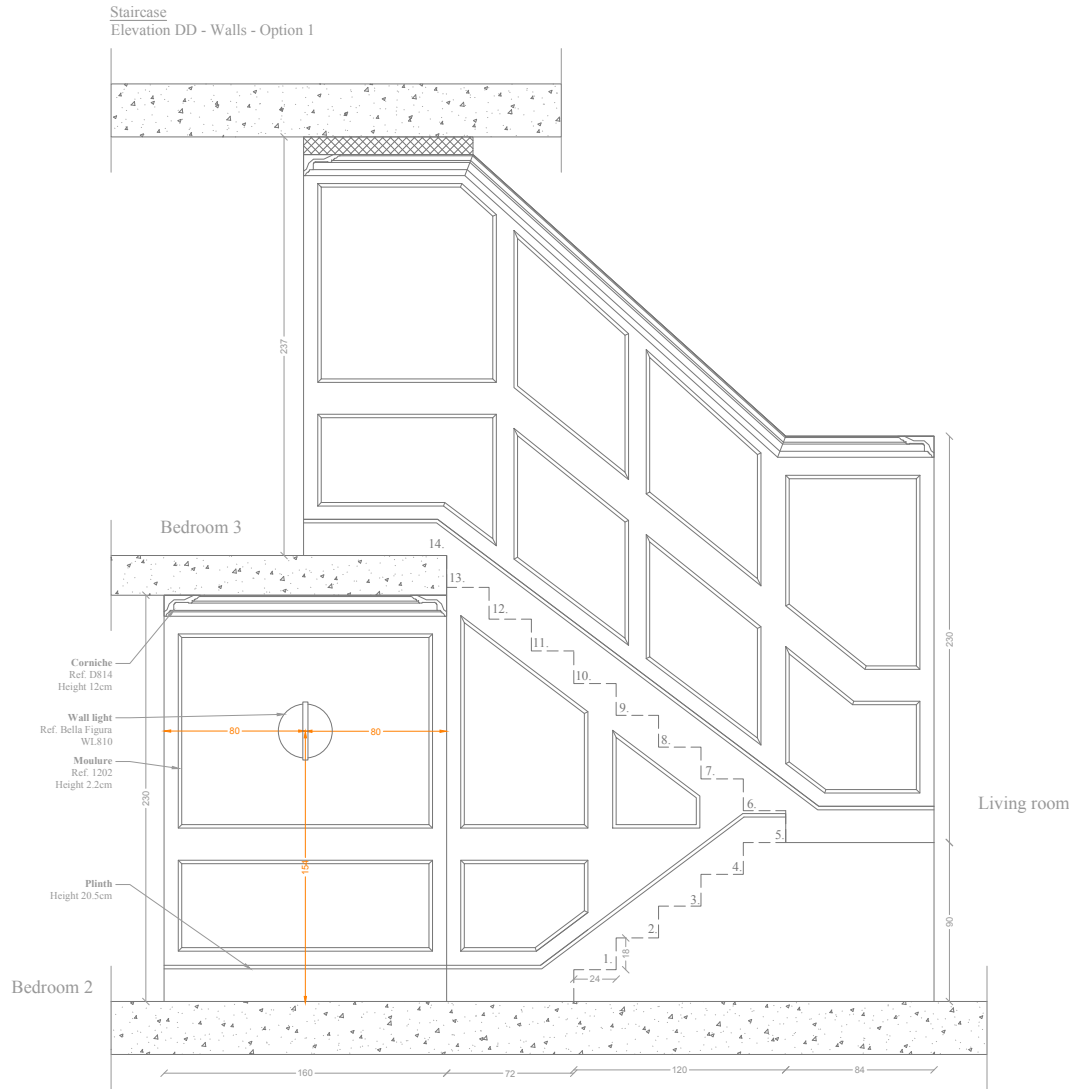
LONDON PENTHOUSE





# LONDON PENTHOUSE

To balance the classical elements,  
the furniture selection will focus on  
organic, modern shapes inspired by  
iconic 20th-century designer Pierre  
Paulin. The use of premium materials  
like travertine, brass, and marble will  
further enhance the space’s earthy  
and refined atmosphere..



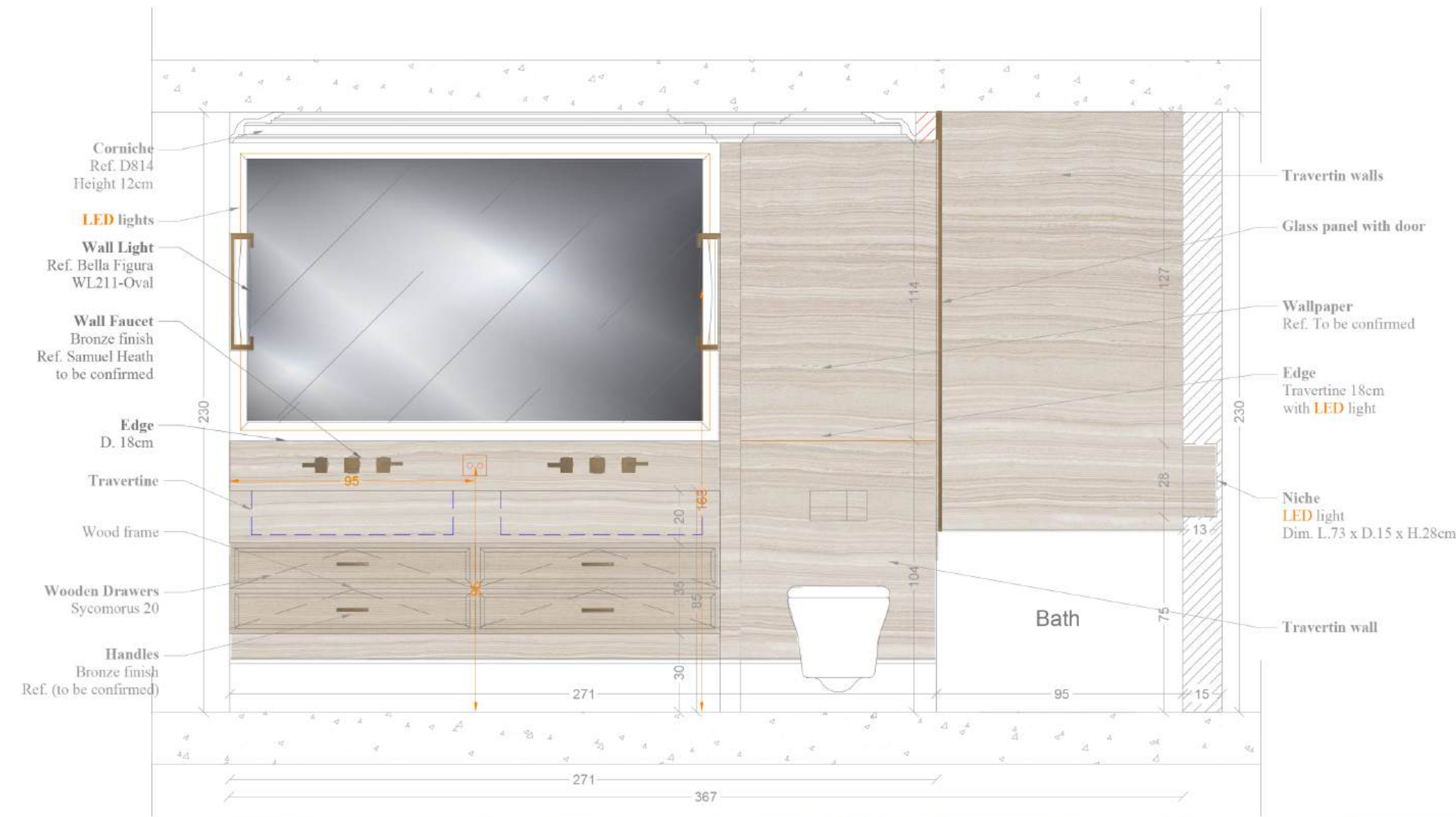






# LONDON PENTHOUSE

Lighting will play a crucial role in the design, with carefully selected pieces that introduce warmth and a touch of artistry, highlighted by subtle gold accents.





# SAINT-TROPEZ FAMILY HOUSE



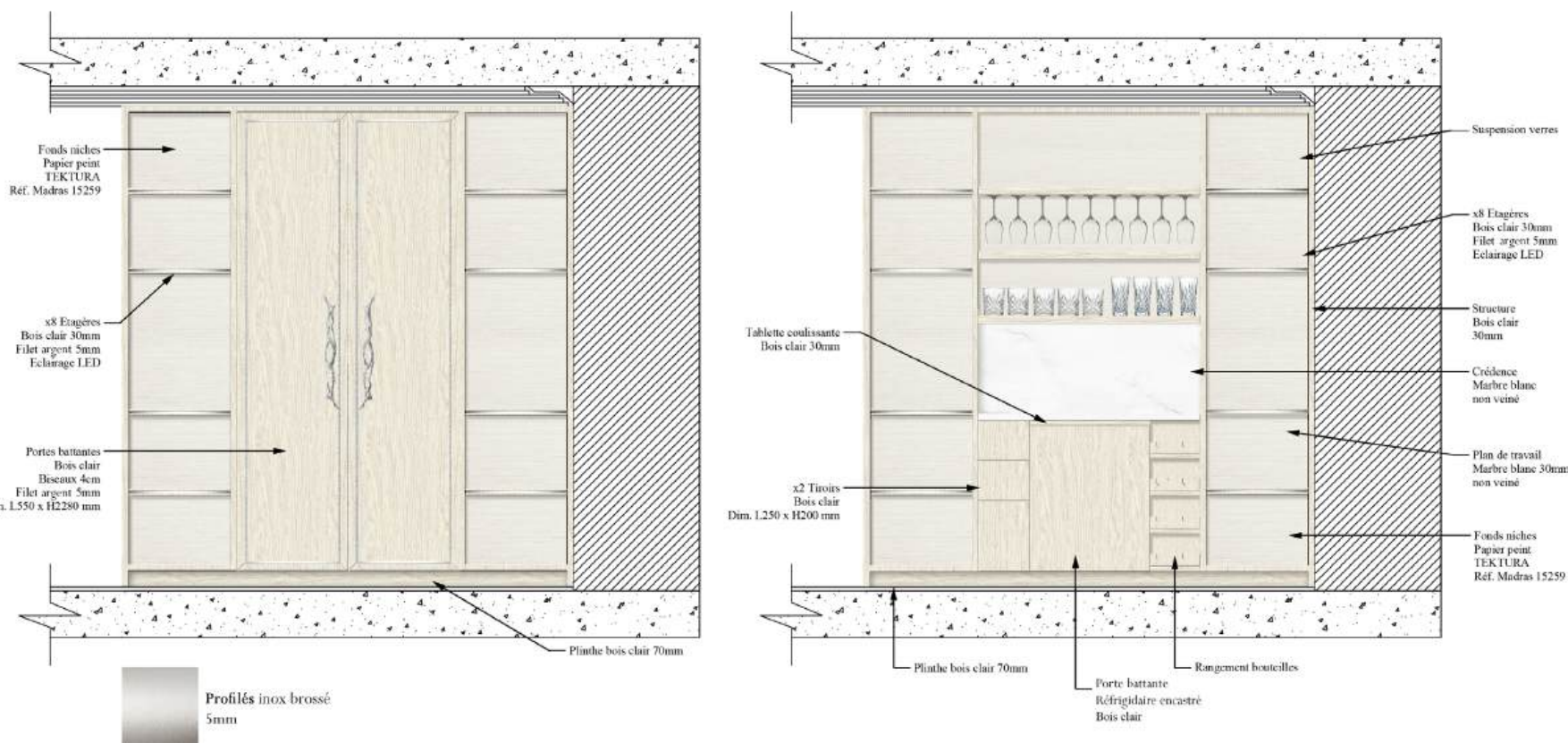
This prestigious listed residence in Saint-Tropez has been completely renovated to offer all the comforts of an elegant waterside vacation home. Studio Dôme designed all the interior architecture, furnishings and decor, creating a warm, friendly atmosphere in perfect harmony with the sea.





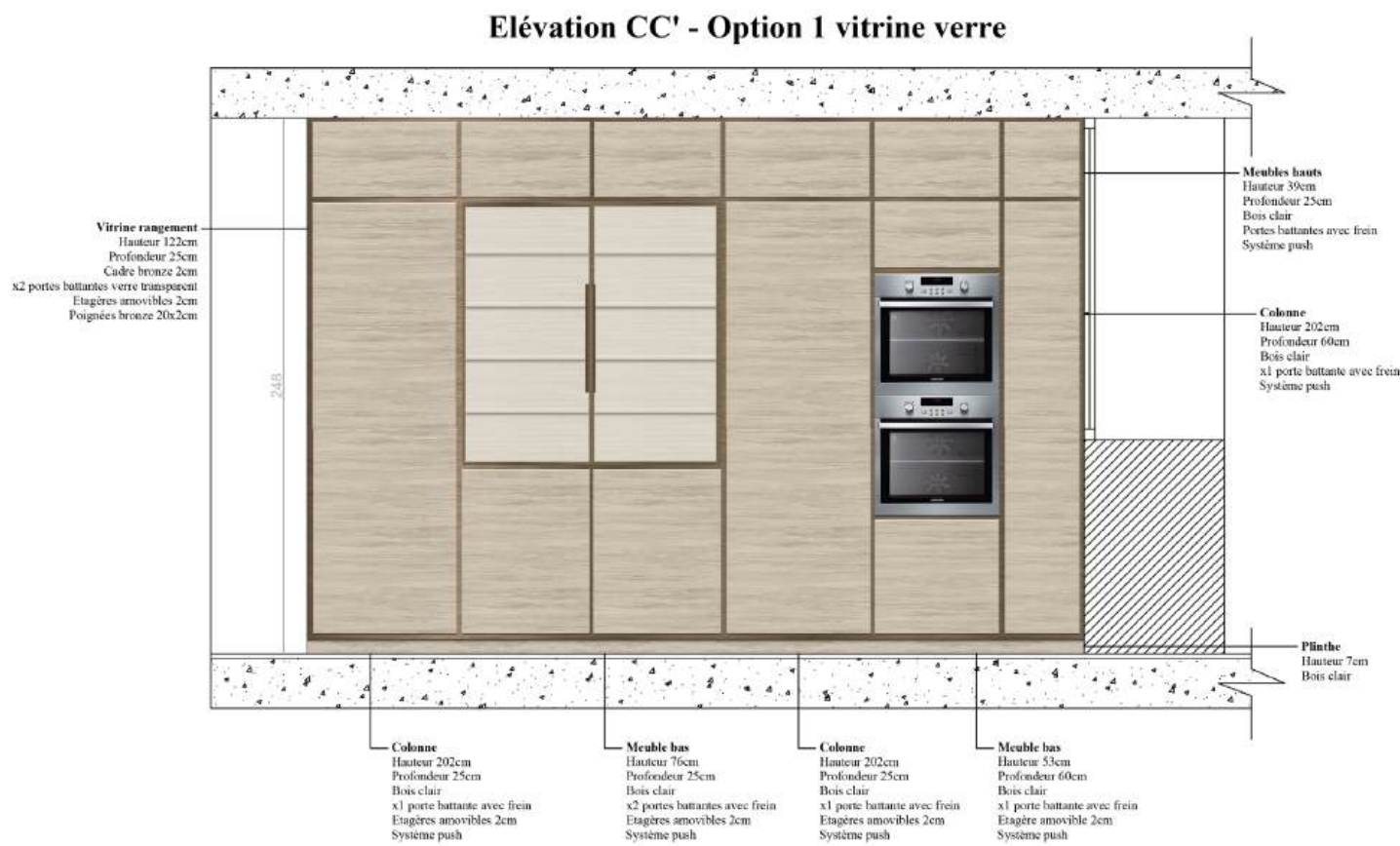


Noble materials such as mother-of-pearl, light oak and marble, combined with soft, soothing tones, bring elegance and serenity. The large living room, with its long sofas and abstract coffee tables, reveals a relaxed atmosphere with its different seating areas, enhanced by soft blue cameos and silver finishes. The cabinetry elements, meticulously designed by our teams, include a built-in bar and bookcases housing a variety of curios.





# SAINT-TROPEZ FAMILY HOUSE



The kitchen is sleek and elegant, combining light oak and bronze beading, with a Corian island that transforms into a dining table as the mood takes you.





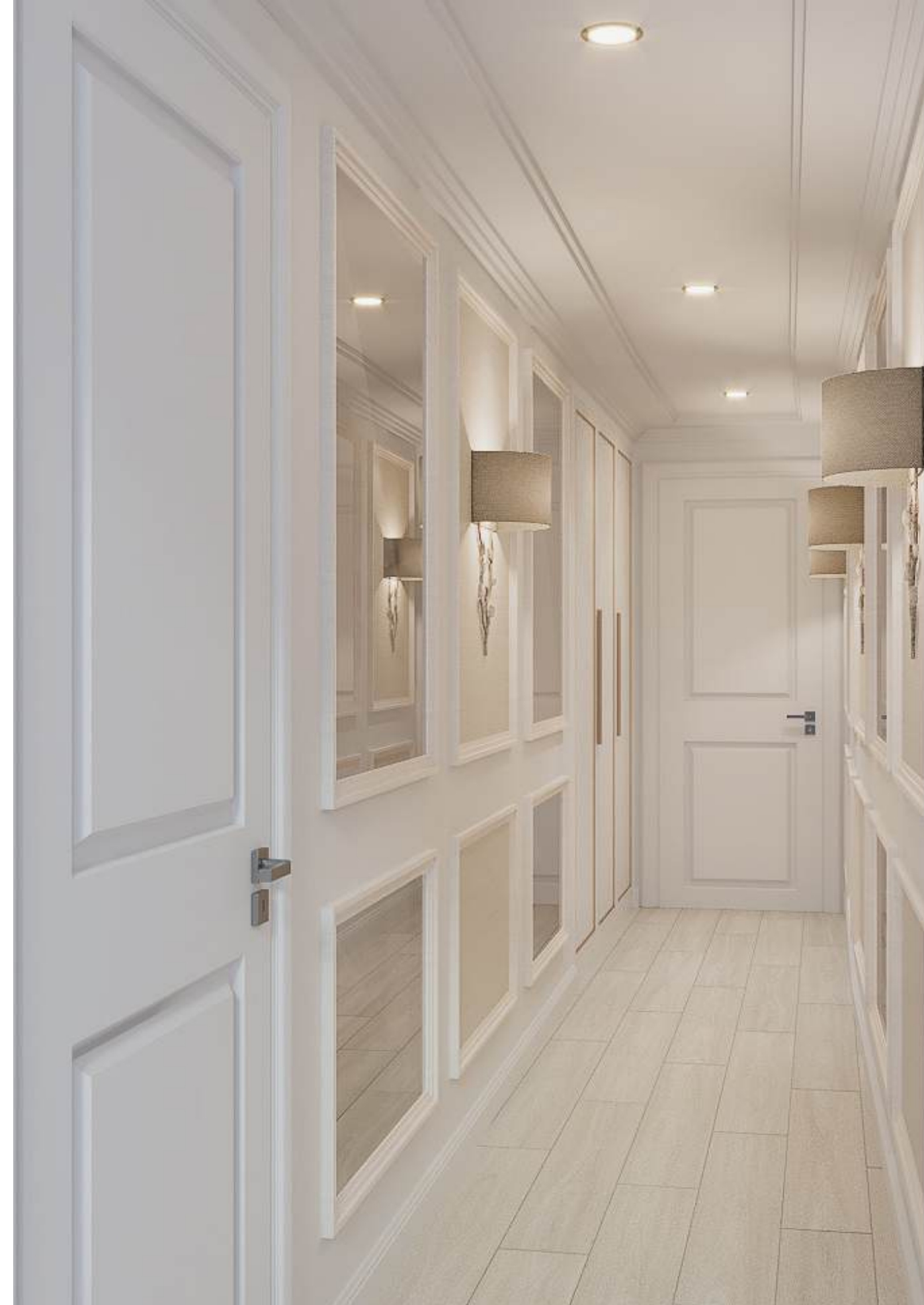




# SAINT-TROPEZ FAMILY HOUSE

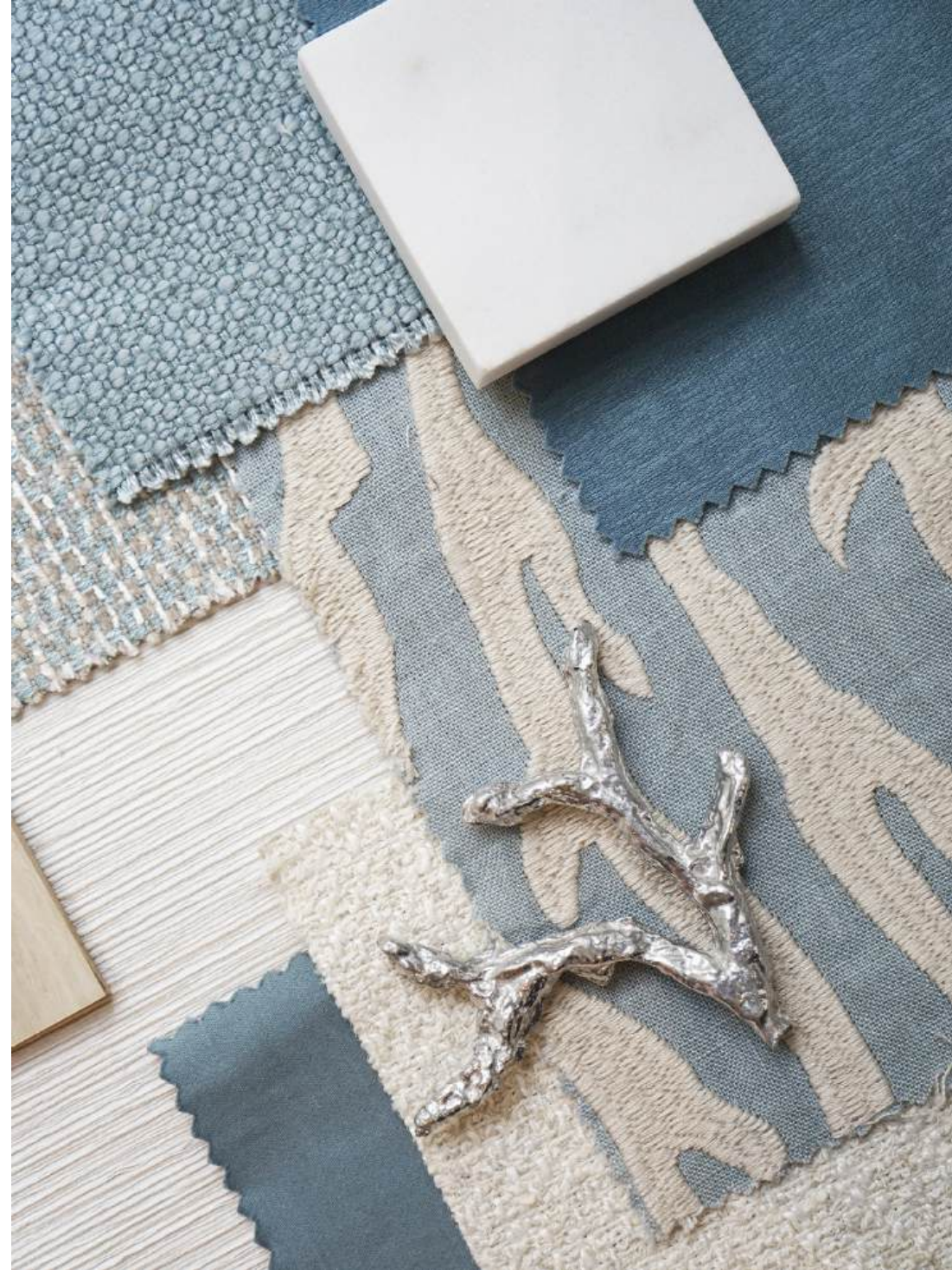
Each bedroom has its own color code in soft shades that reflect the tones of the sea, adding a touch of escape to this exceptional home.

Elegance, comfort and harmony are the watchwords of this exceptional interior.





## AMELS YACHT INTERIOR REFIT



This sumptuous 54.3 m exploration yacht, designed by the prestigious Amels shipyard, has been meticulously renovated by our teams. Spirit 's transformation reflects the majesty and serenity of the ocean, a key source of inspiration for Dôme Project Interiors.

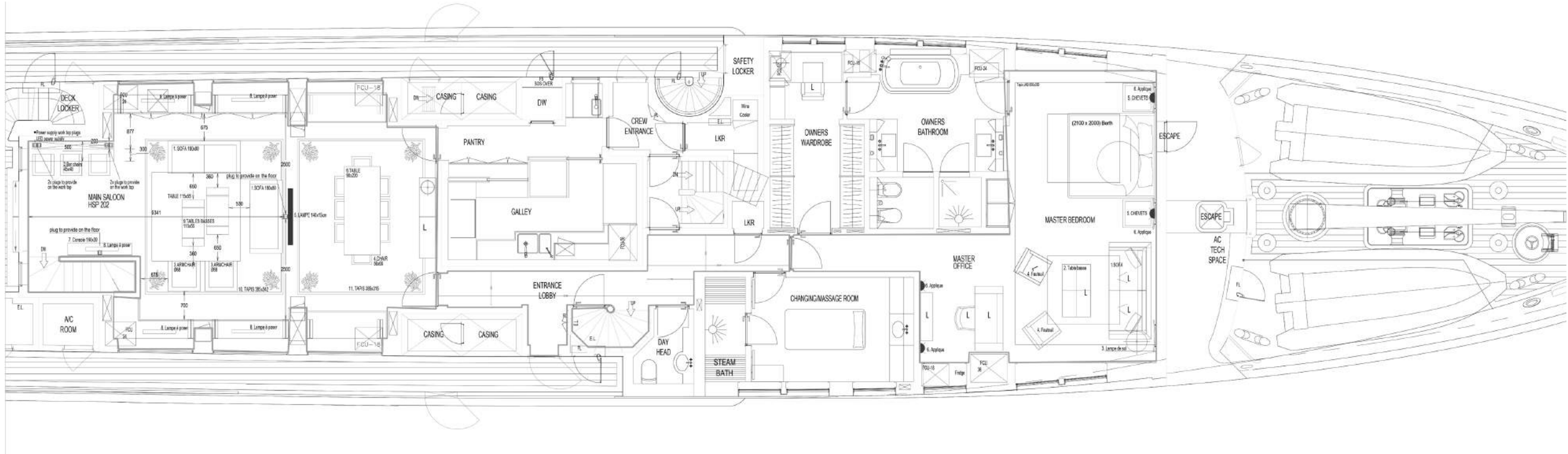
Soft colors and noble materials, such as velvet, pearly ivory lacquer and textured shagreen, have been harmoniously combined to evoke the marine world. Sea-inspired accents can be found in accessories, cushions, rugs, lighting and handles.





# AMELS YACHT INTERIOR REFIT

For even greater comfort in the lounge areas, two bars were designed and made to measure in ivory lacquer with pearlescent reflections echoing the shells. A major lighting job was also carried out to bring clarity to the living areas, as well as a more contemporary look thanks to the delicate sandy tone with iridescent reflections on the walls.

















## MIAMI PENTHOUSE



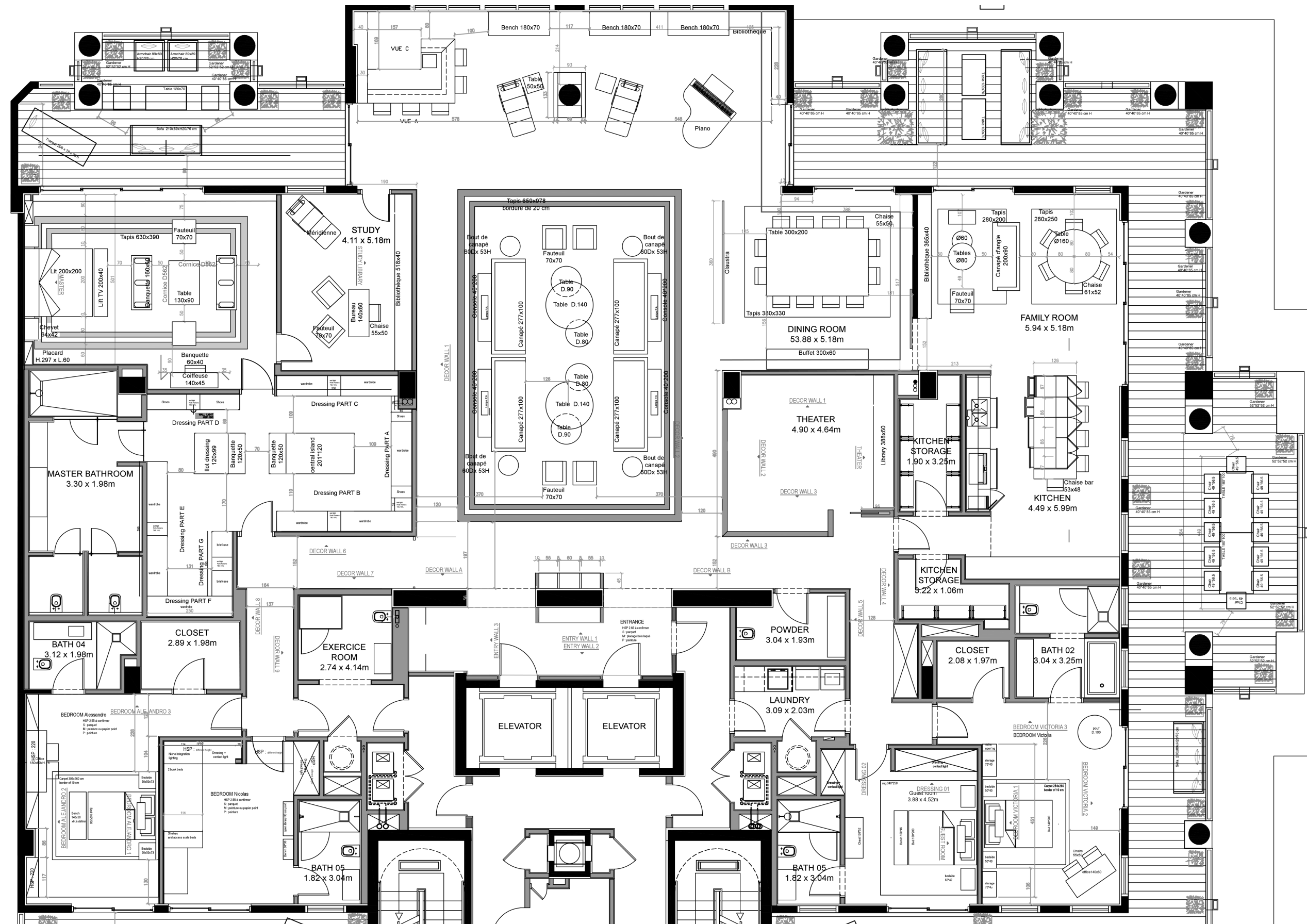
This 800 m<sup>2</sup> apartment, located on an exclusive Miami island with a 200 m<sup>2</sup> terrace overlooking Miami Beach Bay, was entirely designed by Dôme Project Interiors.

Inspired by Art Deco, the project reinterprets classic codes with cornices and moldings sublimated by panels of mother-of-pearl and textured wallpaper.





# MIAMI PENTHOUSE

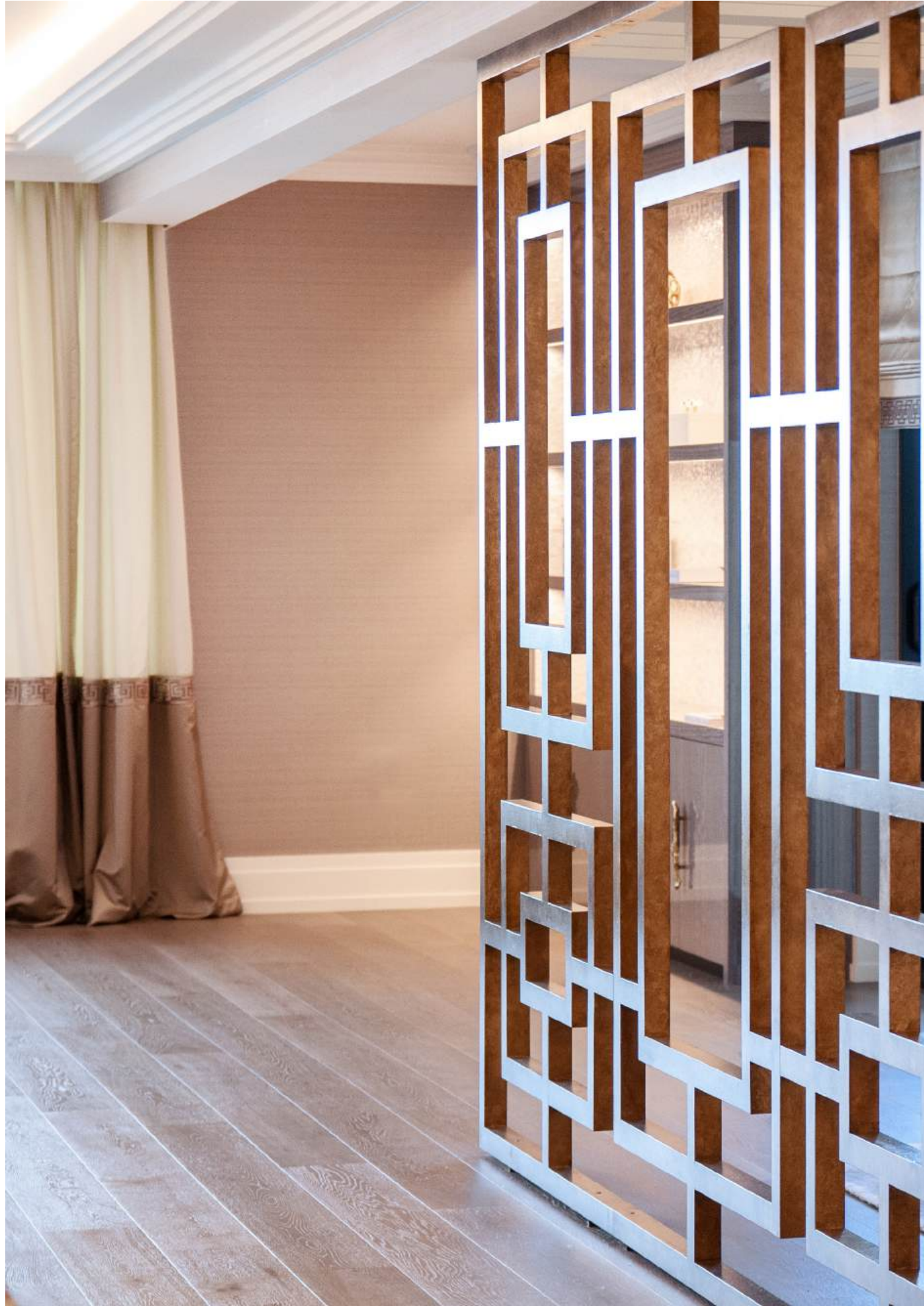


The team worked on an Art Deco theme, ingeniously exploiting refined finishes, such as cornices and moldings, enhanced with mother-of-pearl panels and textured wallpapers.

The aim was to create a warm and elegant interior through the use of noble and natural materials, subtly creating a perfect balance in textures and visually emphasizing the elegance of both the architectural features and the luxurious furniture pieces.









## MIAMI PENTHOUSE



The 200 m<sup>2</sup> living room offers spectacular views of the ocean and South Beach, and is furnished with bespoke sofas and armchairs.

Lighting fixtures adorned with glass pendants add a delicate fresh note, and adorn each of the living room niches.

The dining room, decorated with handmade panoramic wallpapers, is separated by a lacquered wood screen, allowing light to circulate while structuring the space. The use of lacquered wood is a true guiding principle, warming up the space and adding an exotic, noble touch to the entire property.

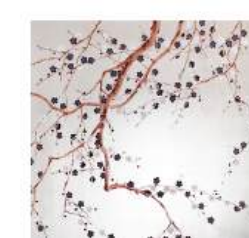
Each room has been the object of particular attention, with refined finishes and tailor-made details, reinforcing the prestigious character and exclusivity of this exceptional apartment.



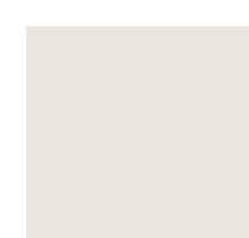




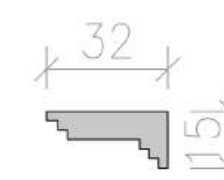
1. Wallpaper  
NOBILIS  
Lux 32



2. Panoramique wallpaper  
DE GOURNAY  
«Plum blossom»



3. Laquered beige



**Corniche D568**  
32x15cm

**Swing doors**  
LUX 32 wallpaper



**Lampe chevet**  
"Droplet lamp"  
PORTA ROMANA  
Finition "Clear-g"  
Réf. GLB63  
Dim. P30.5 x H.

**Plinthe +20**  
Identique salon  
Liseret doré

**Lift TV**  
Laquered beige  
With golden frame

**Chevets**  
GALIMBERTI NINI  
L.64xP.42xH.58cm







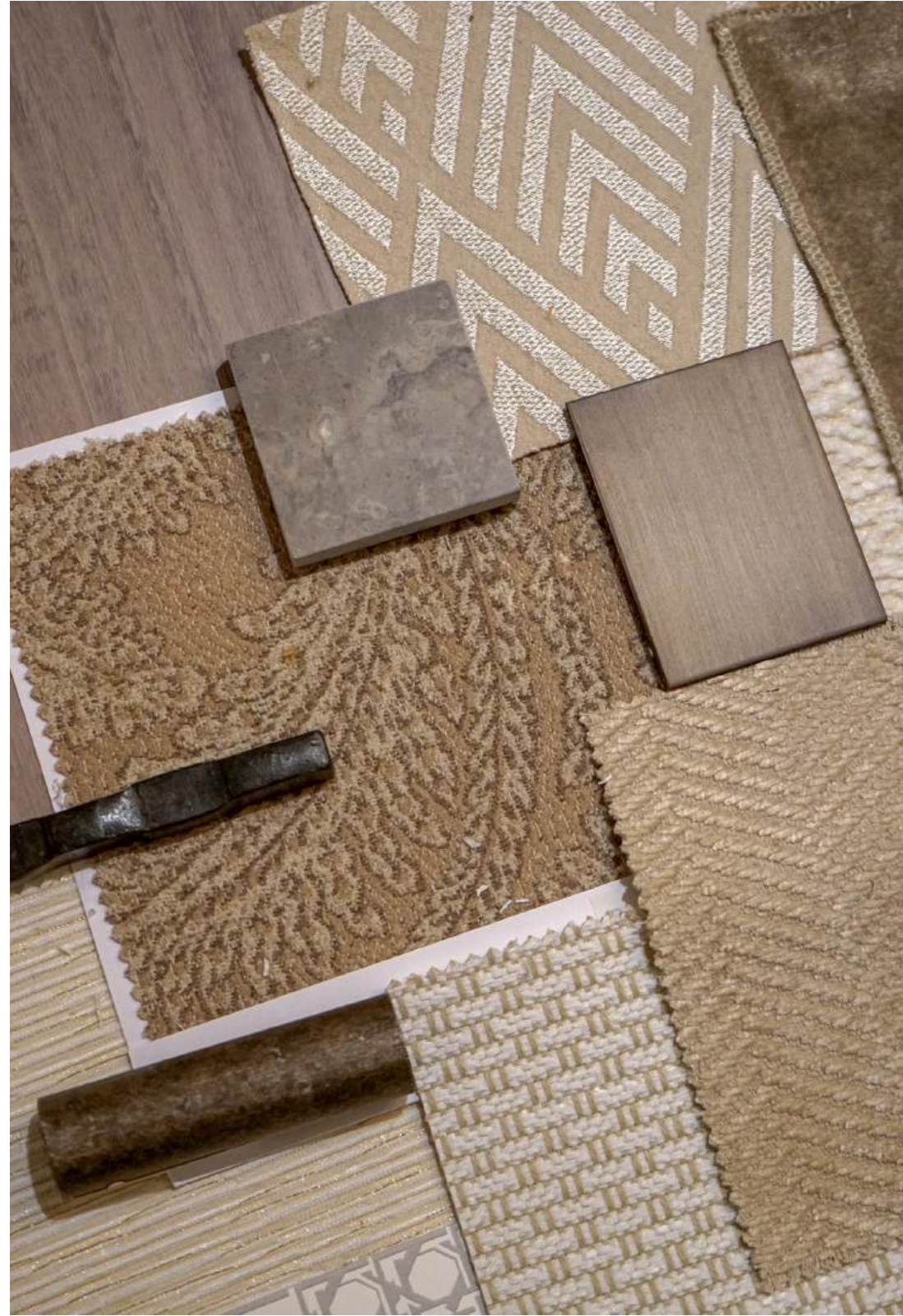








## CHALET FRENCH ALPS



Located in the heart of the French Alps, this luxurious wooden chalet underwent vast restructuring and renovation work.

The idea was to modernise this charming but spectacular property. The exceptional situation of this residence lends itself to luxury and conviviality.

In the living room, chandeliers decorate this lavish architecture with their chains cascading down. The showpiece of this room is a stunning tailor-made wine cellar.

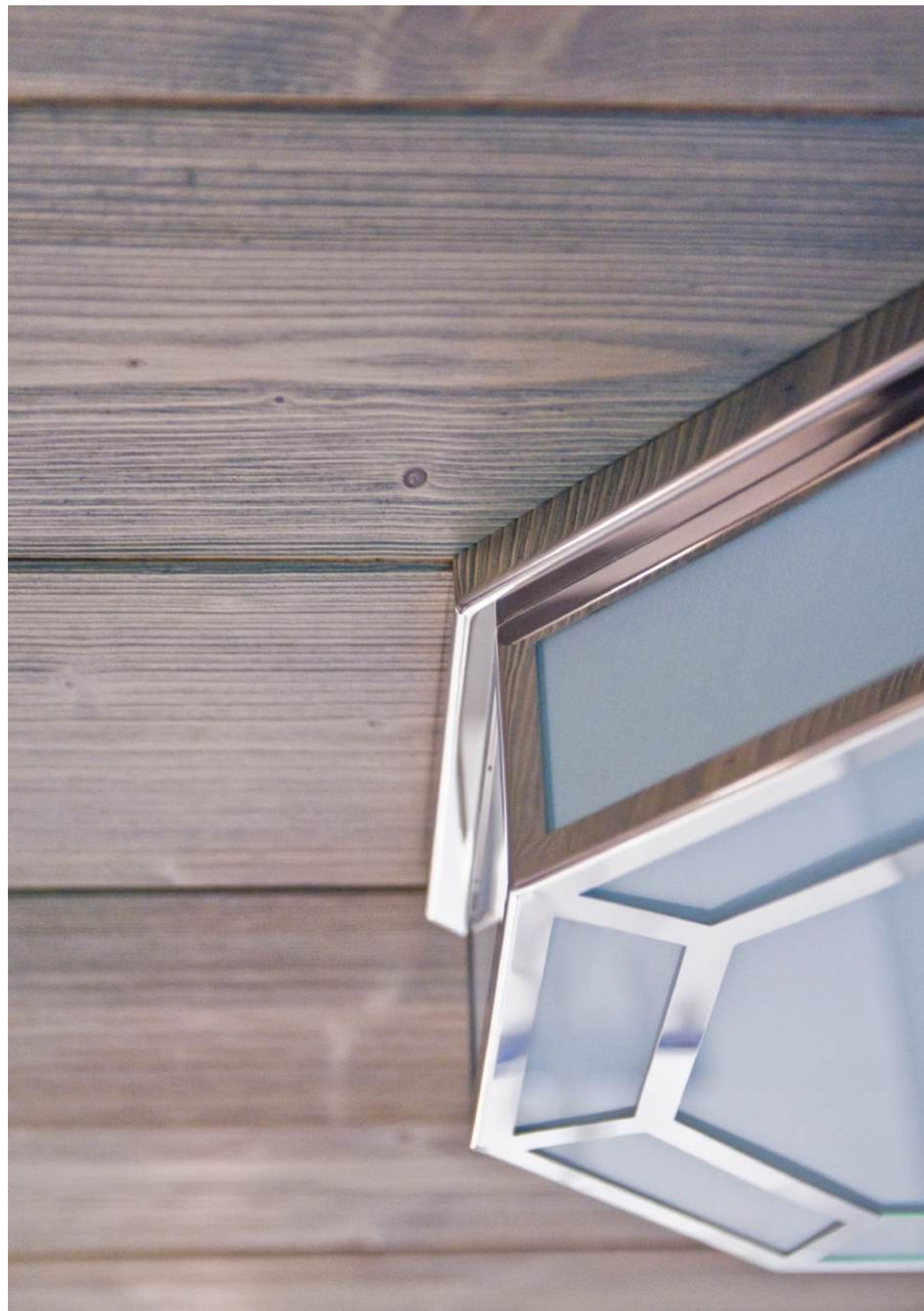
In the basement, a spa decorated with a 8-metre-long aquarium which covers the entire length of the wall. This space was designed as a haven of peace and well-being.







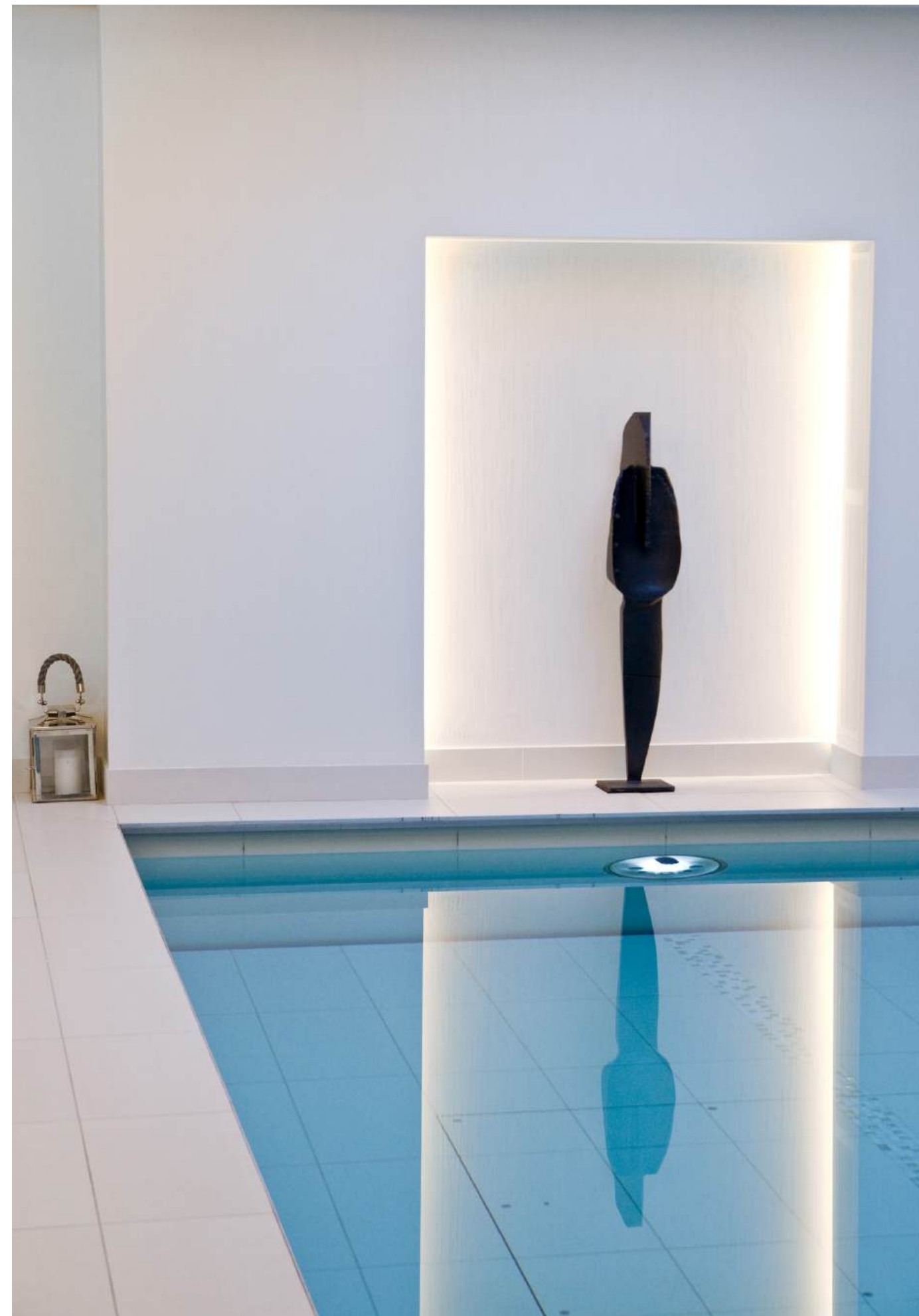












Dôme Project Interiors  
Grand-Rue 4  
1204 Genève  
Switzerland

+41 (0) 22 362 74 70  
[contact@dome.ch](mailto:contact@dome.ch)  
[www.dome.ch](http://www.dome.ch)  
[www.domeprecious.com](http://www.domeprecious.com)